

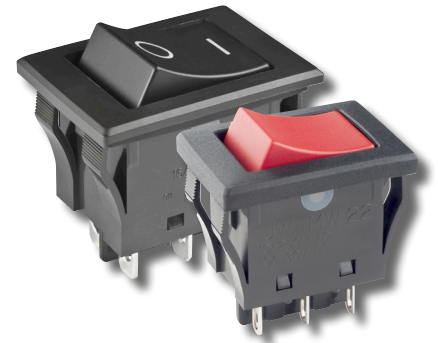
Change Notice

JW Series

Changes to Material of Caps & Case/Base for JWMW & JWLW Rockers

Type of Change:

- Engineering
- Part Number
- Product
- Appearance



Changes to Material of Caps and Case/Base for JWMW and JWLW models

I. There will be a revision to the material of the rocker cap and the case/base for JW Series Rocker Switches, the JWMW and JWLW models only. The cap material, formerly polyphenylene ether (PPE), will be revised to polyamide. The case and base material of melamine resin will change to melamine phenol resin. This change will apply to all JWMW and JWLW standard and custom switches. Effected standard part numbers are listed on the table below.

| JWMW & JWLW Models | Before Change | After Change |
|--------------------|---------------------------|-----------------------|
| Cap Material | Polyphenylene ether (PPE) | Polyamide |
| Case/Base Material | Melamine Resin | Melamine Phenol Resin |

Notes

There are no changes to any of the switches' mechanical functionality, specifications or dimensions. Contact information is below if more details are needed.

| Effected Standard Part Numbers for Series JW Rockers | | | | | |
|--|------------|------------|------------|-------------|------------|
| JWMW Models | | | | JWLW Models | |
| JWMW11RAA | JWMW21RA1A | JWMW11RCA | JWMW21RC1A | JWLW21RAA | JWLW21RCA |
| JWMW21RAA | JWMW21RA2A | JWMW21RCA | JWMW21RC2A | JWLW21RA1A | JWLW21RC1A |
| JWMW11RA1A | JWMW12RAA | JWMW11RC1A | JWMW12RCA | JWLW21RA2A | JWLW21RC2A |
| JWMW11RA2A | JWMW22RAA | JWMW11RC2A | JWMW22RCA | JWLW22RAA | JWLW22RCA |

Effective Date

Changes in material of the caps and cases/bases for JWMW and JWLW Rockers will be effective October 2024. However, the end of sales date may be subject to change depending on inventory of parts.

NKK SWITCHES EUROPE GMBH

Alfred-Herrhausen-Allee 3-5, 65760 Eschborn, Germany
 Tel: +49 61 96 400 189
 Web: www.nkkswitches.eu E-mail: contact@nkkswitches.eu

Change Notice

JW Series

Changes to Identification on Switch Housing for JWMW & JWLW Rockers

Type of Change:

- Engineering
- Part Number
- Product
- Appearance

2. Sides of the switch housing for JWMW and JWLW models of the JW Series will reflect changes in identification, including an updated NKK Switches logo when applicable. The cULus logo will remain, and the UL standard will change from UL 1054 to UL 61058-1. As shown on the *Before* and *After* illustrations below, the ratings and certifications may be arranged differently on the case. These revisions will apply to JWMW and JWLW standard and custom JW Series switches. Effected standard part numbers are the same as for Change 1, listed on page 1.

| JW Series | Changes to Methods of Identification | | | |
|--------------|--------------------------------------|------------------|--------------------------|--------------------------|
| | Before Change | After Change | Before Change | After Change |
| | Older NKK Logo | Updated NKK Logo | Certifications & Ratings | Certifications & Ratings |
| JWMW Rockers | Example: JWMW11RAA | | Example: JWMW11RAA | |
| | | | | |
| JWLW Rockers | Example: JWLW21RAA | | Example: JWLW21RAA | |
| | | | | |

Notes

There are no changes to any of the switches' mechanical functionality, specifications or dimensions. Contact information is below if more details are needed.

Effective Date

Changes in identification on housing of JWMW and JWLW models will be effective October 2024. However, the end of sales date may be subject to change depending on inventory of parts.

NKK SWITCHES EUROPE GMBH

Alfred-Herrhausen-Allee 3-5, 65760 Eschborn, Germany
 Tel: +49 61 96 400 189
 Web: www.nkkswitches.eu E-mail: contact@nkkswitches.eu